



Emergency closure along portion of Snake River amended, effective December 18, 2023.

UPDATED: DECEMBER 18, 2023

EMERGENCY CLOSURE

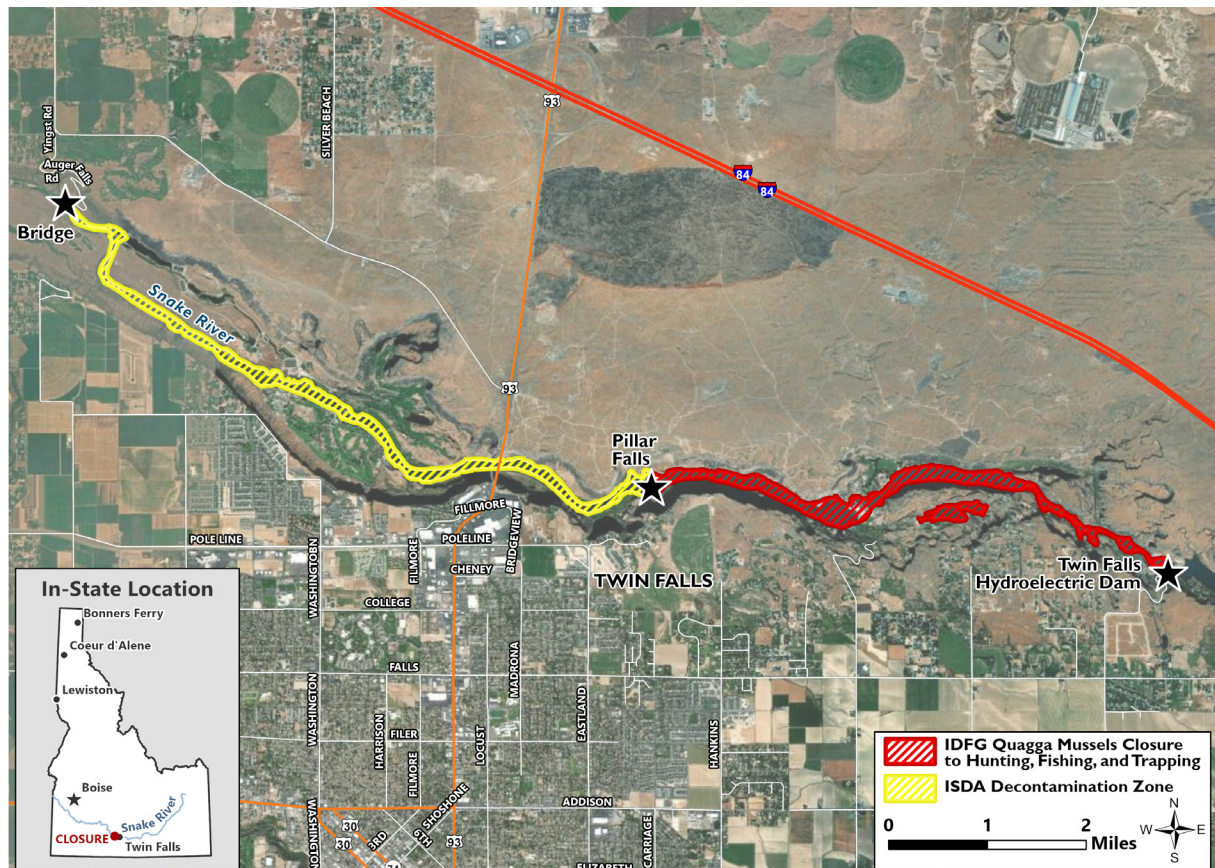
HUNTING, FISHING AND TRAPPING CLOSURE

The Idaho Department of Fish and Game Commission has amended an emergency closure of hunting, fishing, and trapping in a portion of the Snake River to align with the Idaho State Department of Agriculture (ISDA) closure. See map below for revised closure area and new mandatory decontamination zone.

Emergency Closure Area:

Effective December 18, all hunting, fishing, and trapping are closed from Pillar Falls to the Twin Falls Hydroelectric Dam. Mandatory decontamination applies to any watercraft prior to launch and upon exiting the river between Broken Bridge (Yingst Grade) and Pillar Falls.

For more information on the mandatory decontamination zone, visit ISDA at: agri.idaho.gov/main/plants/snake-river-quagga-mussel-veligers/



Continue to next page